

# Office to let

## Dacia Business Center

Bucharest, Sector 2, 153-155 Dacia



### Building information

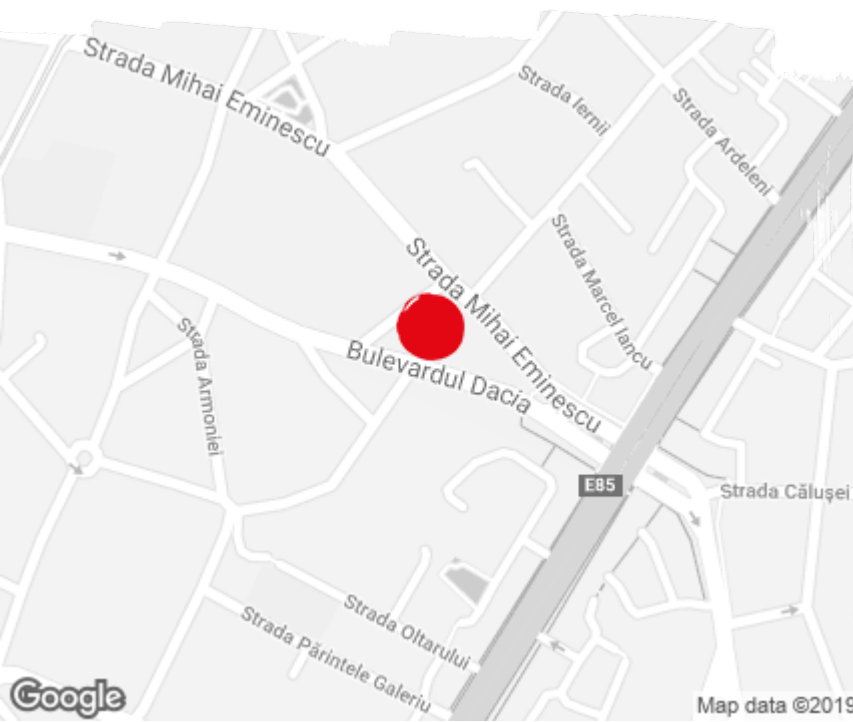
Building status	Existing
Year of construction	2008
Parking ratio	1 / 200 sq m
Total building area	2 200 sq m

### Commercial terms

Office space*	after login *
Parking	after login *
Service charge*	after login *
Minimum lease term	after login *
Availability	after login *

\* Asking terms for m<sup>2</sup>/month

### Location



### Available space

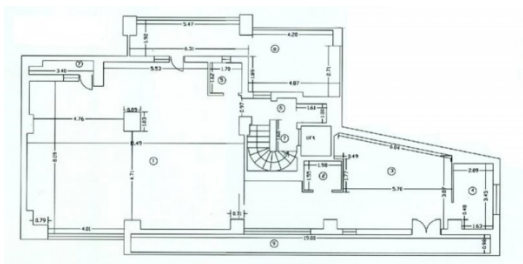
*160 sq m*

Available office space

*To be agreed*

Minimum office space

## Typical floor plan



## Public transport

Metro: M2

Bus: 133, 135, 79, 86

Tram: 21

## Contact



+40 21 302 3400

More information